

Product Description

NFE2L2(E79Q)

Catalog Number: 26336

Gene Symbol: NFE2L2, NRF2

Description: Anti-NFE2L2(E79Q) Mouse Monoclonal Antibody

Background: NFE2L2 protein is encoded by NFE2L2 gene. It is a basic leucine zipper protein that regulates the expression of antioxidant proteins that protect against oxidative damage triggered by injury and inflammation. Several drugs that stimulate the NFE2L2 pathway are being studied for treatment of diseases that are caused by oxidative stress.

Immunogen: A synthetic peptide from the internal region of NFE2L2, which includes the mutation of E79Q, human origin.

Tested Applications: ELISA, WB, IF, IHC

Recommended Dilutions:

| | |
|--------|---------------|
| ELISA: | 1:1000-1:2000 |
| WB: | 1:500-1:1000 |
| IF: | 1:50-1:100 |
| IHC: | 1:50-1:100 |

Concentration: 1.0 mg/ml

Host: Mouse

Clonality: Monoclonal

Isotype: IgG

Purity: Purified from ascites

Format: Liquid

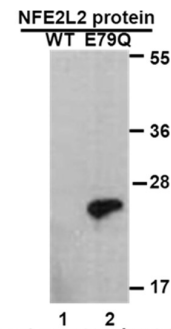
Preservative: No

Constituents: PBS (without Mg²⁺ and Ca²⁺), pH7.4, 150 mM NaCl, 50% glycerol

Species Reactivity: Recognizes NFE2L2(E79Q), but not wild type NFE2L2 protein from vertebrates.

Storage Conditions: Store at -20°C. Avoid repeated freezing and thawing

Western blot:



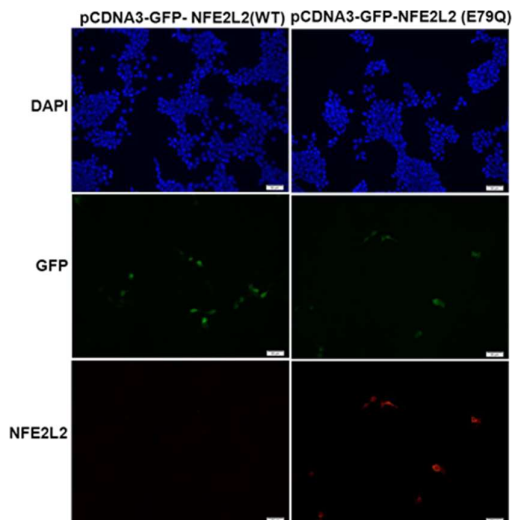
WB: anti-NFE2L2 (E79Q) mAb

Western blot analysis of recombinant NFE2L2 (E79Q) and wild type proteins.

Purified His-tagged NFE2L2 (E79Q) protein (lane2) and corresponding wild-type protein (lane1) were blotted with anti-NFE2L2 (E79Q) monoclonal antibody (Cat. # 26336).

FOR RESEARCH USE ONLY. NOT FOR DIAGNOSTIC APPLICATIONS

Immunofluorescence:



Immunofluorescence of cells expressing NFE2L2 proteins with anti-NFE2L2 (E79Q) antibody.

HEK293T cells were transfected with pCDNA3-GFP-NFE2L2 (WT) plasmid (left column) or pCDNA3-GFP-NFE2L2 (E79Q) plasmid (right column), then fixed and stained with anti-NFE2L2 (E79Q) monoclonal antibody (Cat. # 26336).

FOR RESEARCH USE ONLY. NOT FOR DIAGNOSTIC APPLICATIONS